

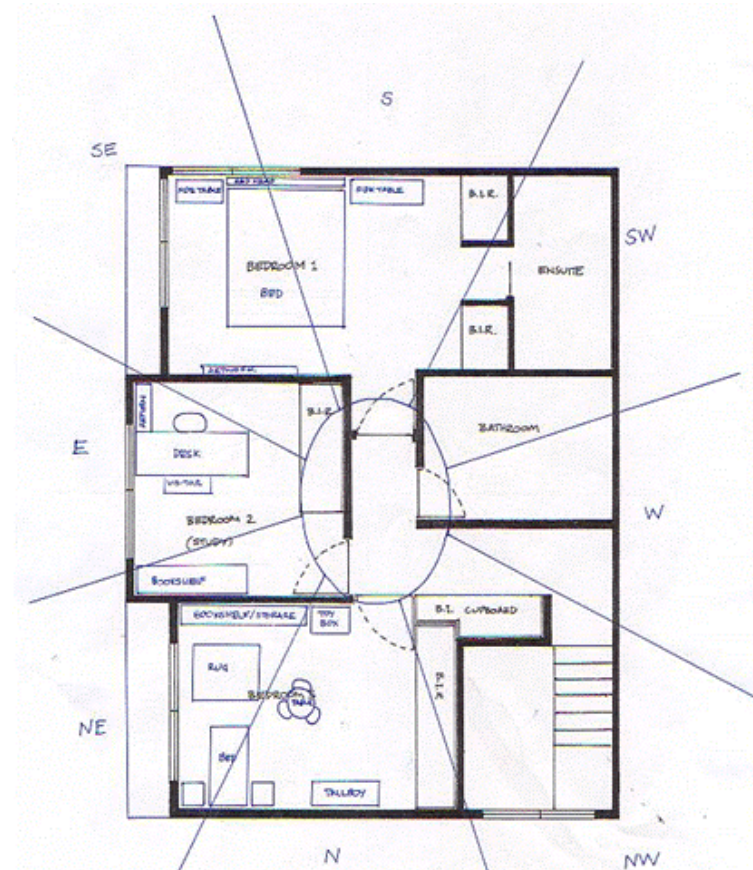


*Examples of Work*

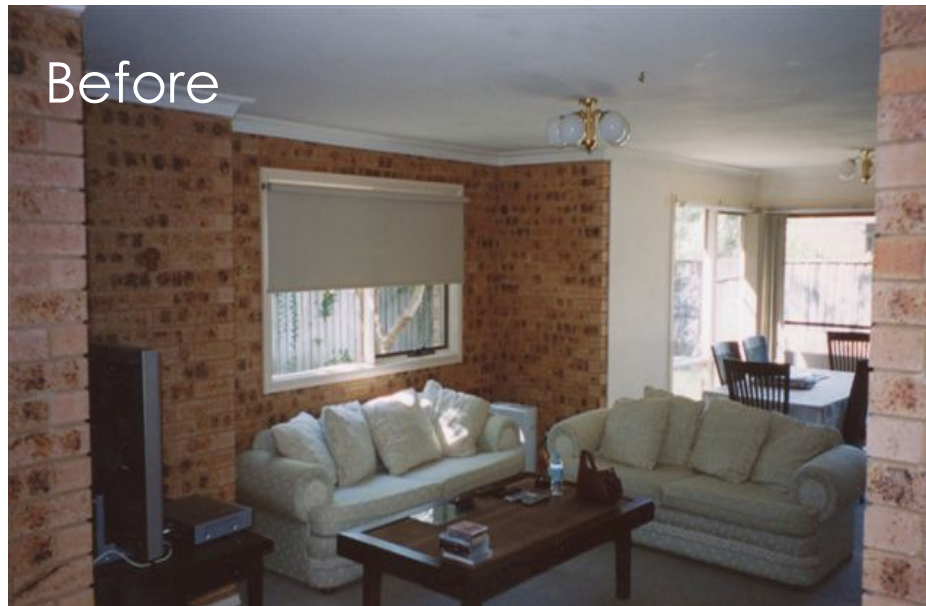
## Traditional Feng Shui Analysis

Age 7, S2/ N2 355° N

		<b>S</b>			
<b>E</b>	1	4	6	8	6
	6		2		4
		8		4	6
	9	5	2	3	4
	5		7		9
		7		9	2
	5	1	9	7	3
		3		5	8
					1
		<b>N</b>			
				<b>W</b>	



Traditional Feng Shui involves an analysis of the floor plan, together with the compass direction and age of the home to calculate the Flying Star Chart – a grid of numbers that have a specific meaning in Feng Shui. As well as the Flying Star analysis, Form and Compass school principles are also analysed in a Traditional Feng Shui consultation.



Living Area



After

This living area was dark and tired with musty carpet and terrible Feng Shui!

The home was renovated to add light and warmth, and the colours used in the decorating scheme support the Feng Shui analysis.



## Conversion of Bedroom to a Home Office

The Flying Star chart indicates that energy in this room is unfavourable for a bedroom, as it implies sickness and depression. However, the wealth sector also exists here, and can only be harnessed if the room is used for active purposes. So the bedroom was converted to a home office, and we applied the 'fire' remedy (the colour red) to deactivate negative energy. The result: business opportunities are arriving unexpectedly and the introverted child who previously slept in the room laughs a lot more, and has never been happier.



## Bathroom Renovation

After

The bathroom previously felt dark and cramped. Skylights were replaced and feature lighting was introduced to add more light. The layout was re-designed to create greater floor space and highlight a feature wall with limestone tiles.



Before



## Kitchen Renovation



## After

The former kitchen was old and dated, and the owners refused to cook in it!

Reflective surfaces were used to add light and give the kitchen a more spacious feel. Re-designing the cupboards and raising the bench level created more floor space, more storage space and better ergonomics to suit the height of the owners. Kitchen supplied by Schmidt Kitchens.



Before



Courtyard Makeover



After





Before



## Courtyard Makeover

After



The courtyard was previously damp and muddy and the owners didn't use the space. To suit their lifestyle, a paved entertaining area was created and surrounded by a peaceful garden containing a Buddha, and a custom water feature. The Buddha was placed in favourable 'mountain star' energies to enhance health and relationships. The result: continued good health and no divorce on the horizon! Landscaping by A&G Garden Design, Ph 0412 173 067.